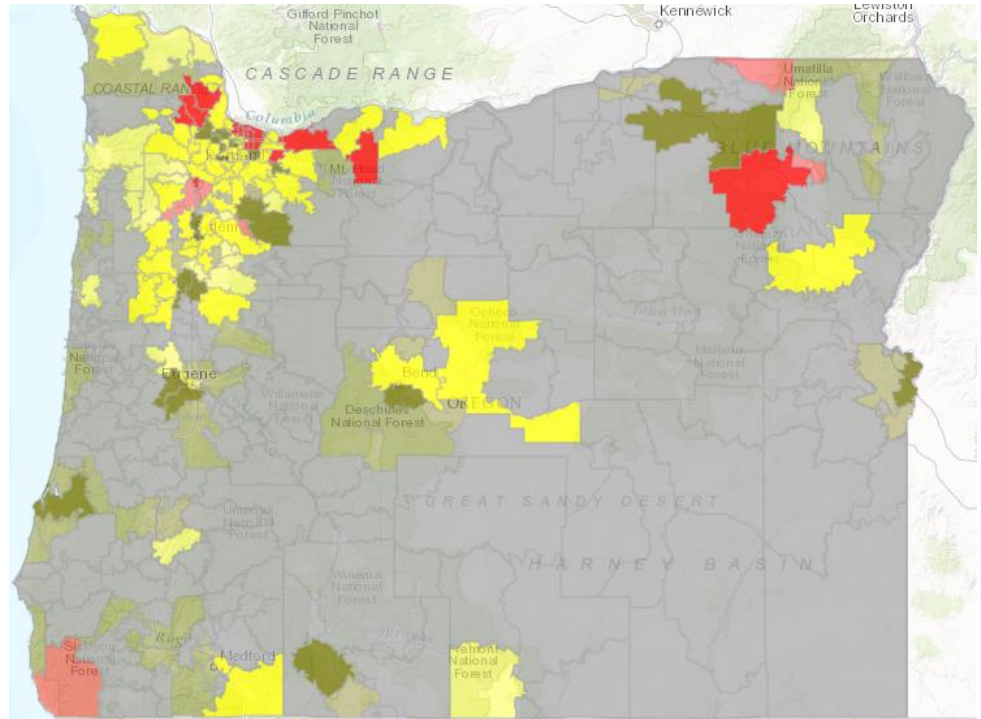


## Radon in Oregon

The Oregon Radon Awareness Program (ORAP) works to educate the public on the hazards of radon, promotes radon testing and mitigation, and encourages radon-resistant new construction throughout the state.

The data used to make this map comes from long- and short-term radon test results. These results are submitted to ORAP by test kit manufacturers.

The level of radon risk for each zip code is based on the maximum result, the average of all results and the percent of locations within the zip code with a result of 4 pCi/L or greater.



**What do the colors mean?** The color is a general indication of risk from indoor radon. Red is the highest level of risk. Green is the lowest. Yellow is in between.

**Why are some colors faded?** The faded color indicates that there are only 5-19 locations in the zip code where we have test results. Because that is a very low number of locations we only assign it a provisional risk level. Provisional risk levels are denoted with asterisks (ex \*Moderate\*).

**Why are some areas grey?** Zip codes with fewer than 5 locations were not given a risk level and are colored grey.

Regardless of the risk level shown here, testing your home is the only way to know whether there are elevated levels of radon.

## Radon Legislation

The following Oregon counties have Radon Mitigation Code Requirements for new construction: Baker, Clackamas, Hood River, Multnomah, Polk, Washington, and Yamhill counties.

All school districts must submit a radon testing plan for schools by September 1, 2016. Testing must be done before January 1, 2021.

## Contact us

Curtis Cude, Oregon Radon Awareness Program Manager

[radon.program@state.or.us](mailto:radon.program@state.or.us)

971-673-0440