

NAVAJO RADON UPDATE

VIVIAN CRAIG, SR. ENVIRONMENTAL SPECIALIST

DARLENE JENKINS, GIS ANALYST

NAVAJO NATION ENVIRONMENTAL PROTECTION AGENCY



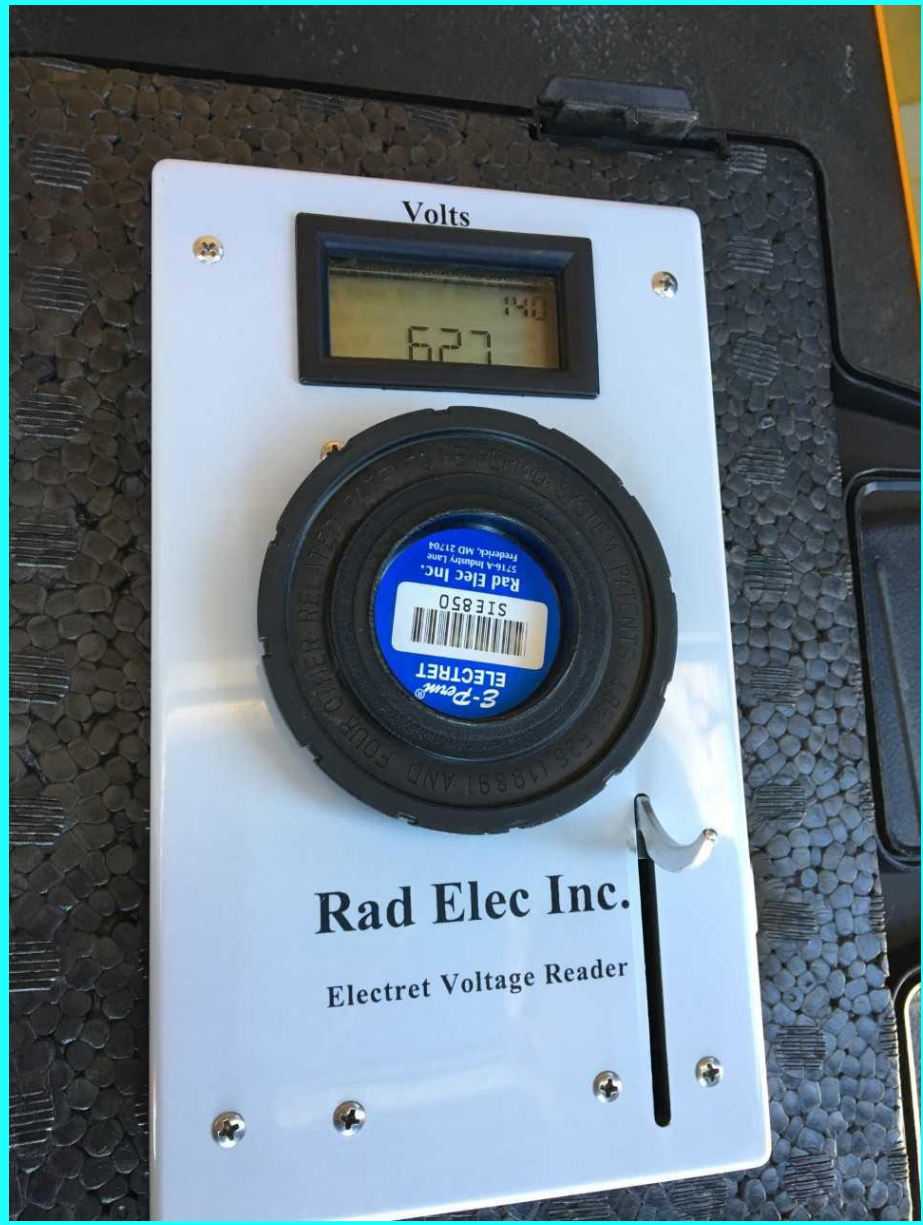
CONTAMINATED STRUCTURE PROGRAM

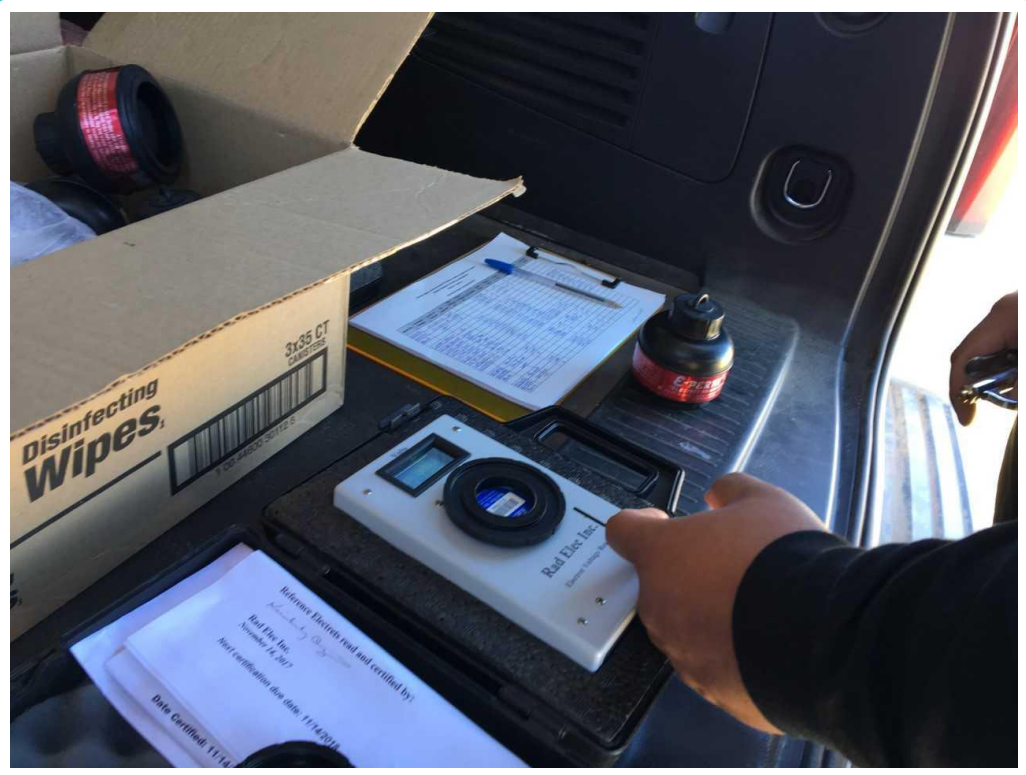


- EPA and the NNEPA Contaminated Structures Program (CSP) evaluates structures on Navajo Nation that may have been constructed using abandoned mine materials or built on or near abandoned mines. The CSP is responsible for conducting evaluations of potentially contaminated structures, yards and material, as well as removal and cleanup of contaminated structures and materials if there is an exposure risk. The program is for Navajo residents living close to mines or who suspect their home was built with contaminated materials. Participation in the program is voluntary and at no cost to the resident.

It was found that older homes and structures were built using abandoned mining materials potentially leading to exposure exceeding background (naturally occurring) levels. These materials include ore and waste rock used for foundations, walls, or fireplaces; mine tailings mixed into cement used for foundations, floors, and cinder block walls; and other contaminated building materials (wood, metal, etc.) that people may have unknowingly salvaged from the abandoned uranium mine areas.





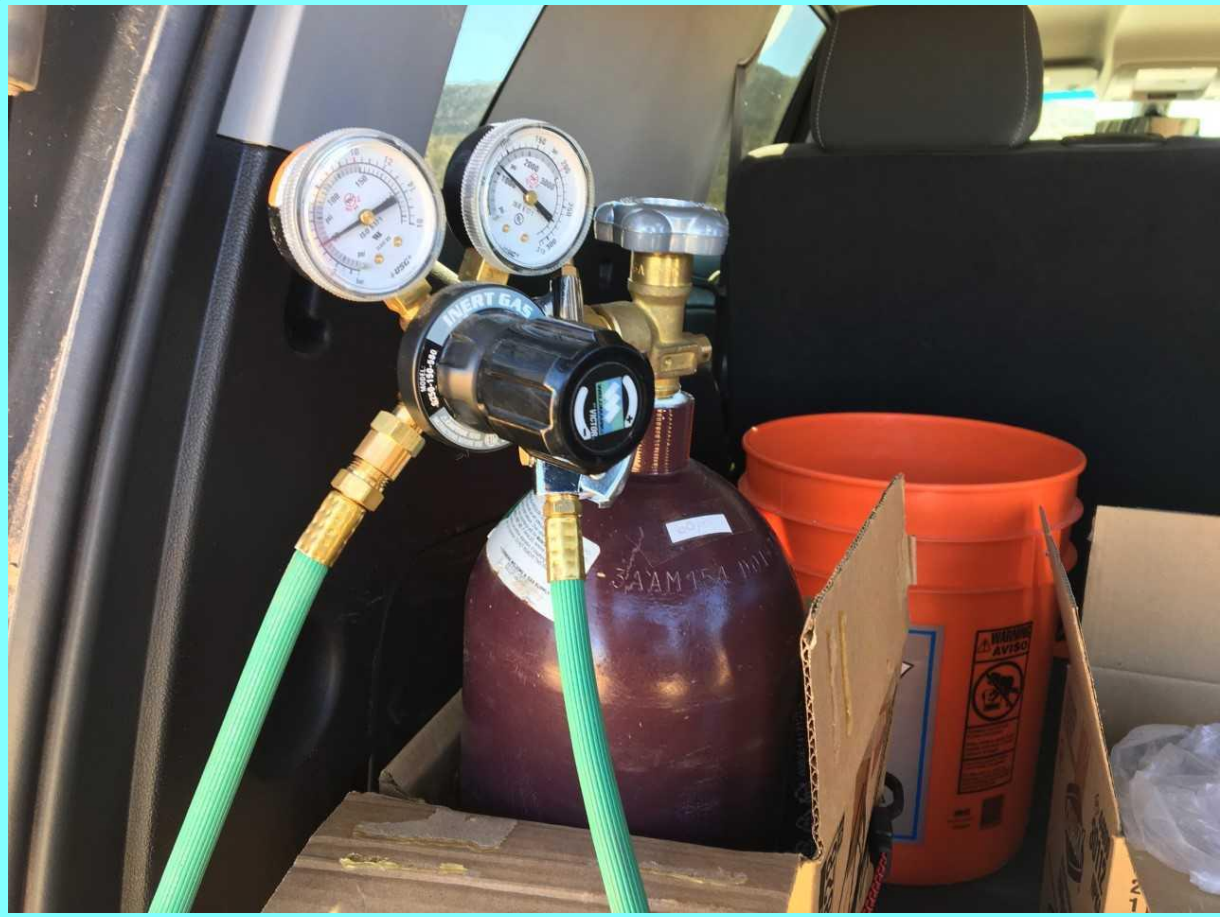


- Serial No.
- Homesite No.
- Room ID No.
- QC Sample)
- Start Voltage (V)
- Finish Voltage (V)
- Start Time
- Finish Date
- Finish Time
- Sample Time
- Gamma (micro hour)
- Elevation (feet)

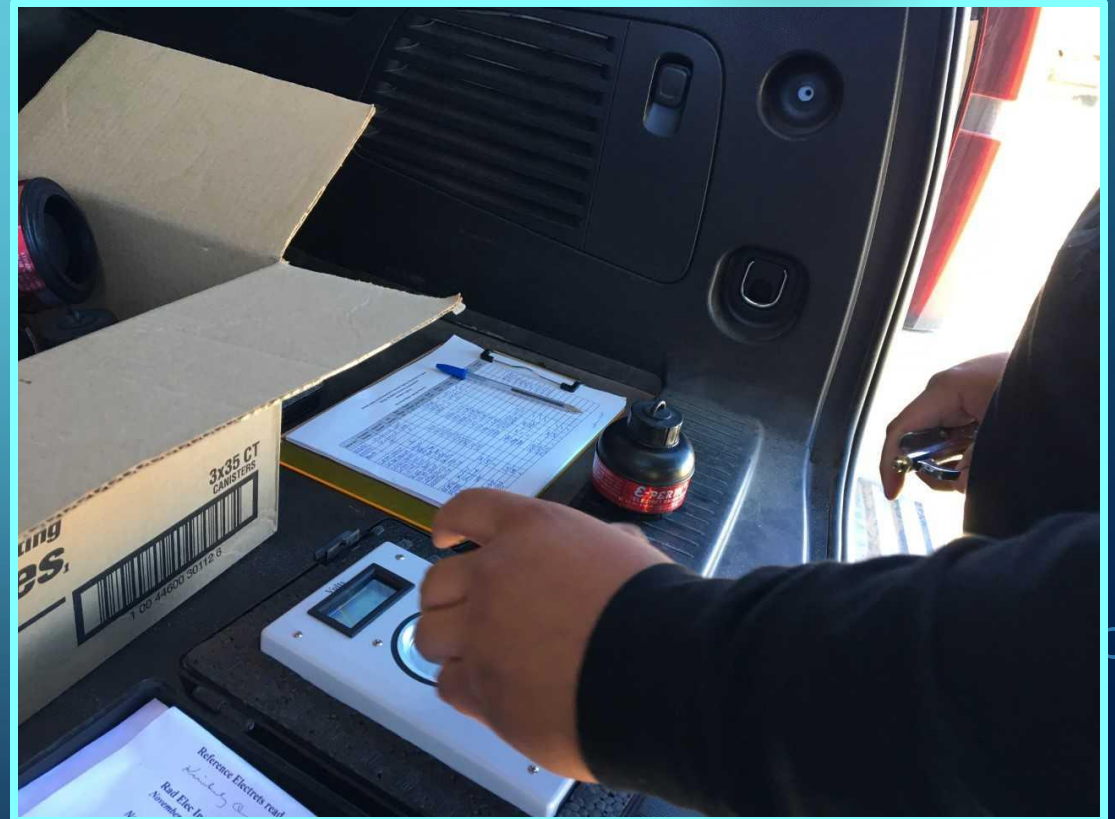


17 pCi/L



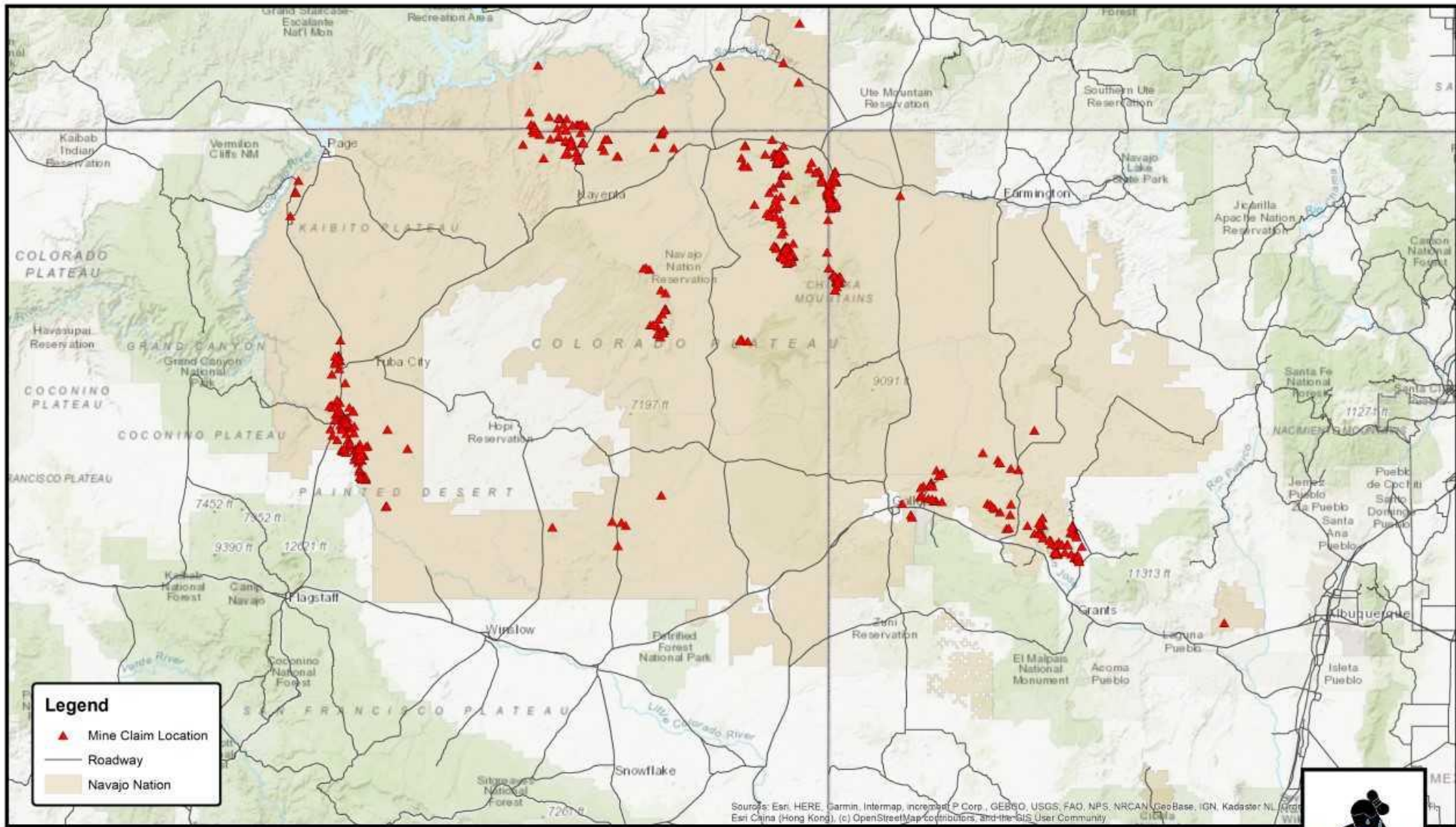


Nitrogen Tank









Source: Esri, HERE, Garmin, Intermap, increment P Corp., GEBCO, USGS, FAO, NPS, NRCAN, GeoBase, IGN, Kadaster NL, Ordnance Survey, Esri China (Hong Kong), Swisstopo, Mapbox Labs, Swatch, Bing, Swire, DeLorme, NAVTEQ, Aerotech, IGN Paris, IGN, Kadaster NL, Esri, Esri China (Hong Kong), (c) OpenStreetMap contributors, and the GIS User Community



0 12.5 25 50 Miles

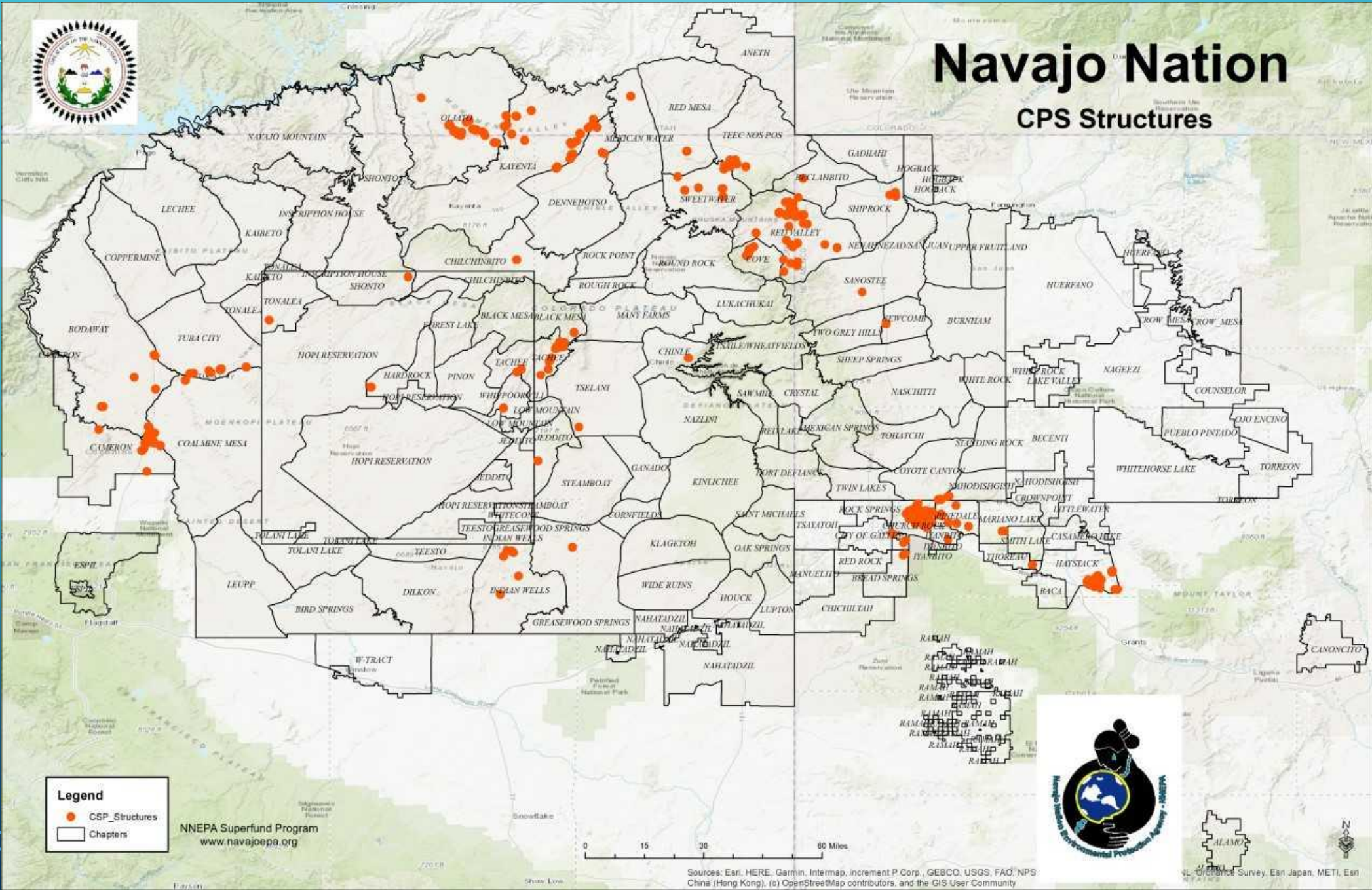
Abandoned Uranium Mines on or near Navajo Nation

NEPA Superfund Program
PO Box 2946, Window Rock, AZ 86515
1.800.314.1846
www.navajoepa.org





Navajo Nation CPS Structures



Legend

- CSP_Structures
- Chapters

NNEPA Superfund Program
www.navajoepa.org

0 15 30 60 Miles

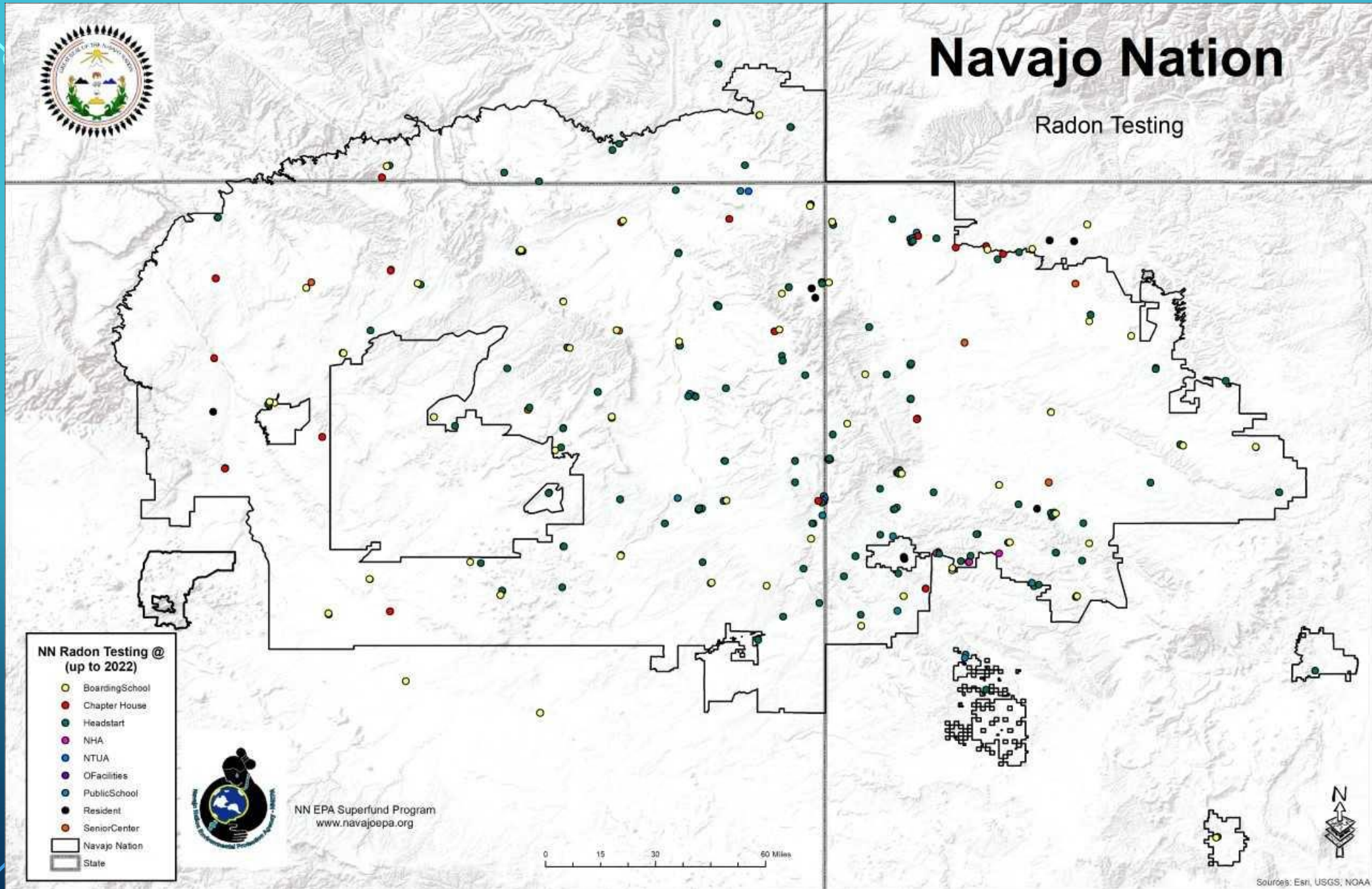
Sources: Esri, HERE, Garmin, Intermap, increment P Corp., GEBCO, USGS, FAO, NPS, China (Hong Kong), (c) OpenStreetMap contributors, and the GIS User Community





Navajo Nation

Radon Testing







Ahéheé

